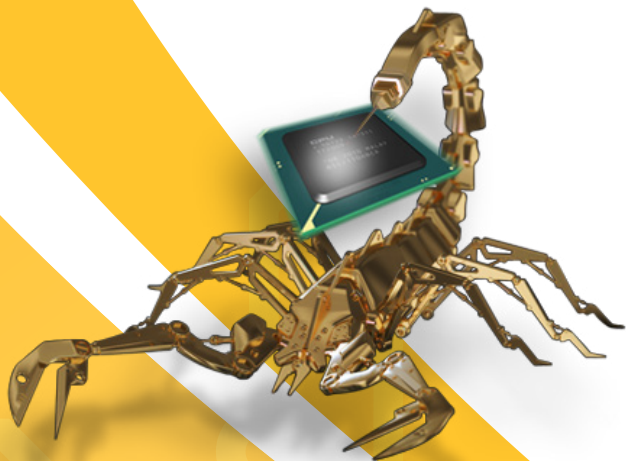


APR

ADVANCED PACKAGE REWORK

SCORPION REWORK SYSTEM

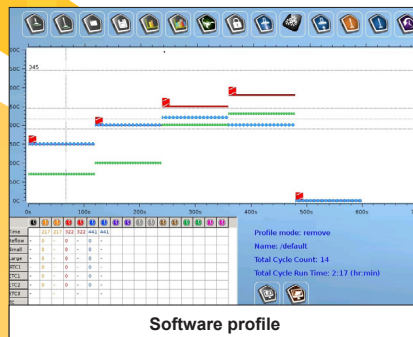
The Scorpion Advanced Package Rework System ensures both accurate component placement and custom tailored reflow profiles in one user friendly, single platform rework system.



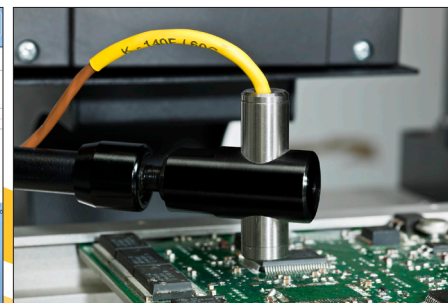
Smartplace Technology and Automatic Precision Placement

Hardware Features

- ◆ Desktop sized
- ◆ 2700W dual zone preheater with 550W top heater
- ◆ Single phase 208-240VAC, 50/60Hz, 13A
- ◆ Open-ended PCB holder with micrometer adjustment
- ◆ Mechanical X and Z axis movement on linear bearings
- ◆ Component is retracted automatically at the end of reflow
- ◆ Linux-based integral computer
- ◆ High definition SmartPlace vision system
- ◆ Gram force placement head uses pick and place machine nozzles
- ◆ Contactless IR sensor for auto start at pre-determined temperatures



Software profile



Contactless IR sensor features a remote temperature sensor to ensure repeatability

Software Features

- ◆ Auto-Profiling
- ◆ Real time graphical display of solder joint temperatures
- ◆ Internal storage of profile data with transfer via USB flash drive
- ◆ Simple heater calibration



Dual, full color HD camera



Side view camera for increased reflow visibility

SmartPlace Technology Vision System Features

- ◆ Dual, full color HD camera
- ◆ 8 digital zoom modes
- ◆ Selectable camera views
- ◆ Diffused LED lighting for shadow-free component alignment

APR-Rework.com

DESCO INDUSTRIES

